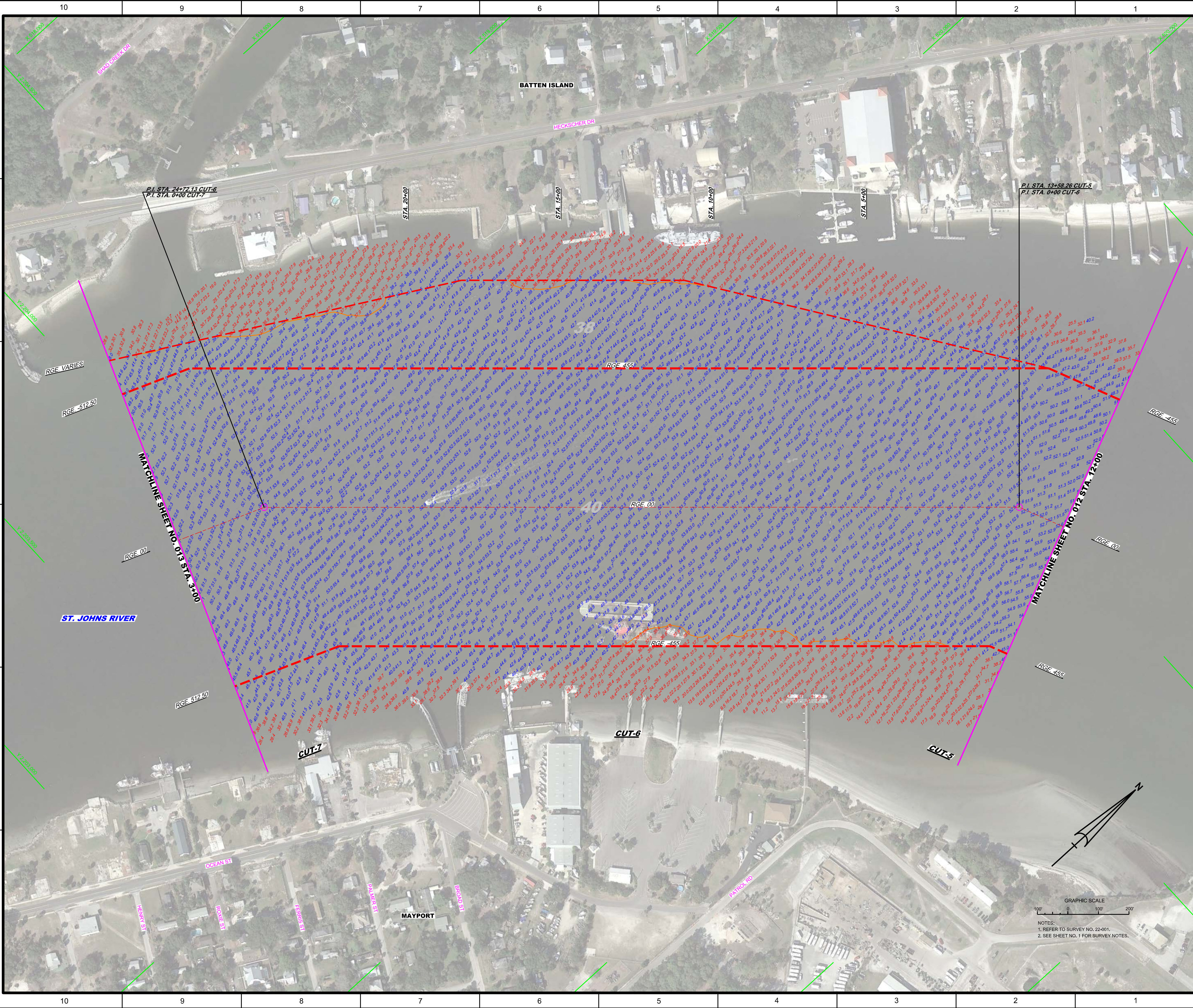


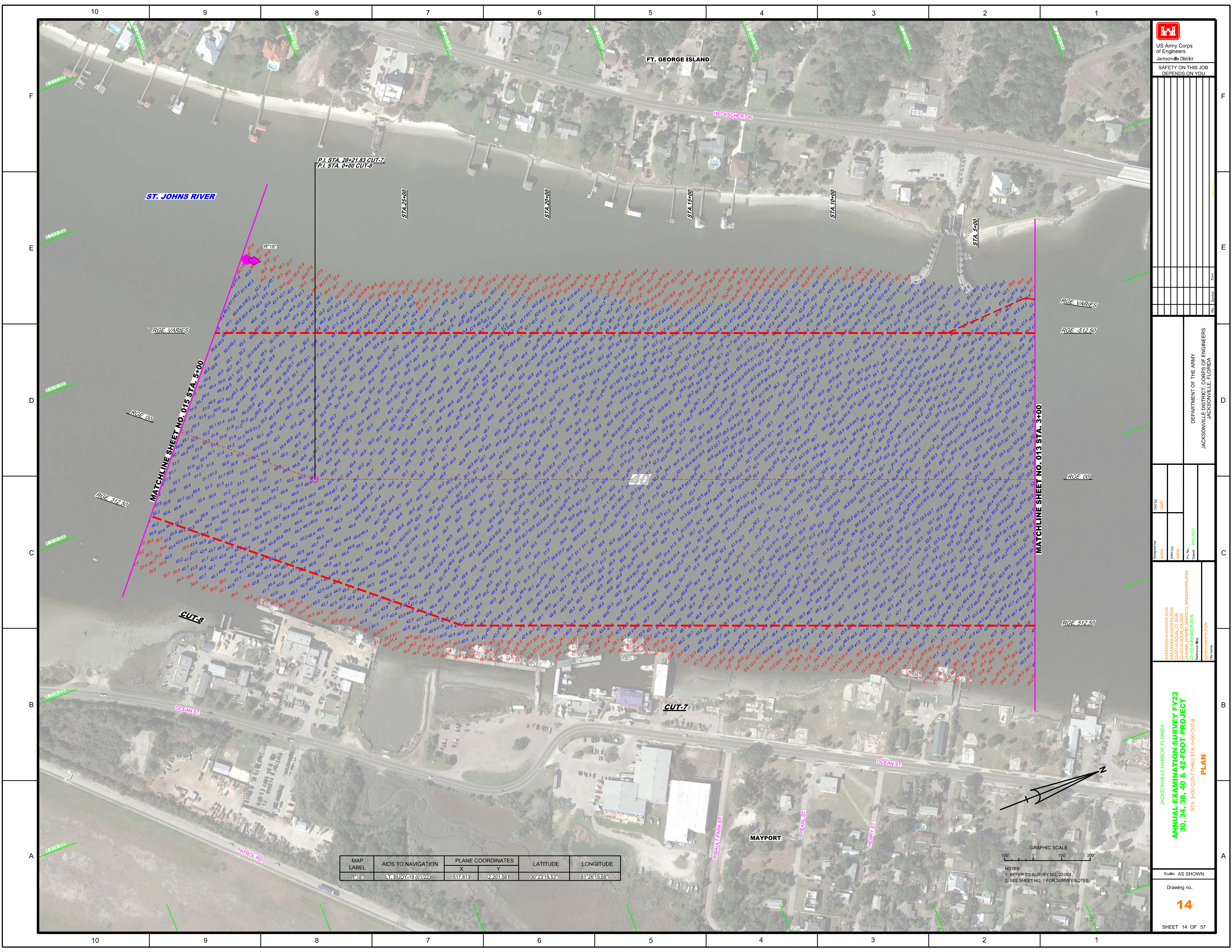
NOTES:
 1. REFER TO SURVEY NO. 22-001.
 2. SEE SHEET NO. 1 FOR SURVEY NOTES.



<p>US Army Corps of Engineers Jacksonville District</p>	
<p>SAFETY ON THIS JOB DEPENDS ON YOU</p>	
<p>DEPARTMENT OF THE ARMY JACKSONVILLE DISTRICT, CORPS OF ENGINEERS JACKSONVILLE, FLORIDA</p>	
<p>Drawn by: WRM</p>	<p>Checked by: GHR</p>
<p>Designed by: WRM</p>	<p>Reviewed by: WRM</p>
<p>Project No: 22-001-HARBOR_FL00N</p>	<p>Date: JAN 2022</p>
<p>ANNUAL EXAMINATION SURVEY FY22 30, 34, 38, 40 & 42-FOOT PROJECT</p>	
<p>STA. 12+00 CUT-5 THRU STA. 3+00 CUT-7 PLAN</p>	
<p>Scale: AS SHOWN</p>	
<p>Drawing No. 13</p>	
<p>SHEET 13 OF 57</p>	

GRAPHIC SCALE
100' 0 100' 200'

NOTES:
1. REFER TO SURVEY NO. 22-001.
2. SEE SHEET NO. 1 FOR SURVEY NOTES.



P.I. STA. 28+21.83 CUT-7
P.I. STA. 0+00 CUT-8

ST. JOHNS RIVER

FT. GEORGE ISLAND

HECKSCHER DR

STA. 25+00

STA. 20+00

STA. 15+00

STA. 10+00

STA. 5+00

RGE VARIES

RGE VARIES

RGE -512.50

RGE 00

RGE 00

RGE -512.50

MATCHLINE SHEET NO. 015 STA. 5+00

MATCHLINE SHEET NO. 013 STA. 3+00

CUT-8

CUT-7

OCEAN ST

OCEAN ST

PATROL RD

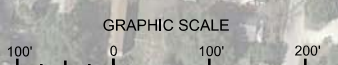
MAYPORT

REBUILT PARK ST


PEARL ST

HENRY ST

MAP LABEL	AIDS TO NAVIGATION	PLANE COORDINATES		LATITUDE	LONGITUDE
		X	Y		
R-18*	LT. BUOY-18 (1/22)	517.813	2,201.581	30°23'19.53"	81°26'19.68"



NOTES:
1. REFER TO SURVEY NO. 22-001.
2. SEE SHEET NO. 1 FOR SURVEY NOTES.



US Army Corps of Engineers
Jacksonville District
SAFETY ON THIS JOB
DEPENDS ON YOU

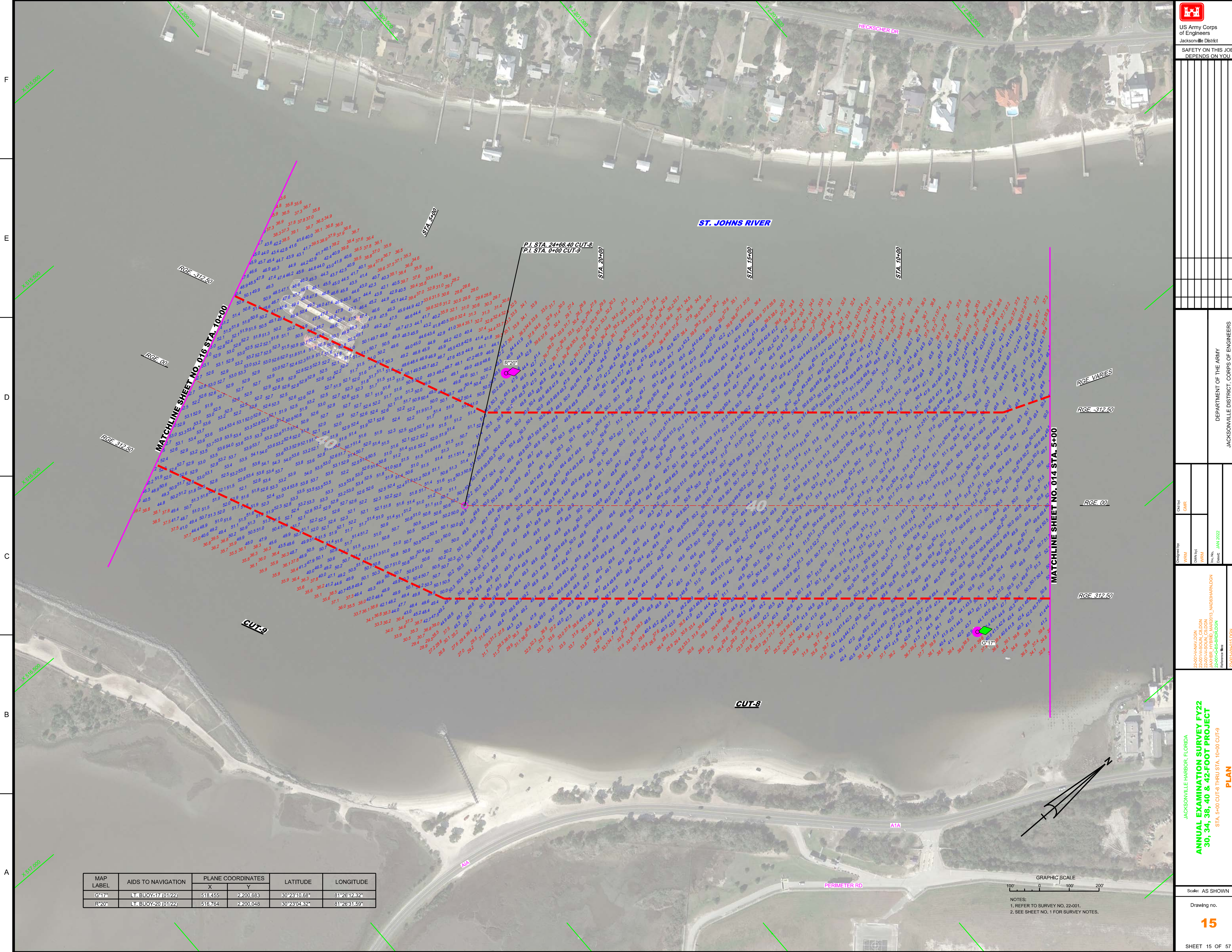
DEPARTMENT OF THE ARMY
JACKSONVILLE DISTRICT, CORPS OF ENGINEERS
JACKSONVILLE, FLORIDA

Designed by: **WRM**
Checked by: **GHR**
Drawn by: **WRM**
In Charge: **WRM**
Date: **JAN 2022**

XXXXXXXXXXXXXXXXXXXX
XXXXXXXXXXXXXXXXXXXX
22-001-HARBOR_FL_07.DGN
JAN 18 10:58 AM 2022
22-001-HARBOR_FL_07.DGN
Reference File:
22-001-HARBOR_FL_07.DGN
File Name:

JACKSONVILLE HARBOR, FLORIDA
ANNUAL EXAMINATION SURVEY FY22
30, 34, 38, 40 & 42-FOOT PROJECT
STA. 3+00 CUT-7 THRU STA. 5+00 CUT-8
PLAN

Scale: AS SHOWN
Drawing no.
14
SHEET 14 OF 57



MAP LABEL	AIDS TO NAVIGATION	PLANE COORDINATES		LATITUDE	LONGITUDE
		X	Y		
G17*	LT. BUOY-17 (01/22)	518,455	2,200,683	30°23'10.68"	81°26'12.32"
R20*	LT. BUOY-20 (01/22)	516,764	2,200,048	30°23'04.32"	81°26'31.59"



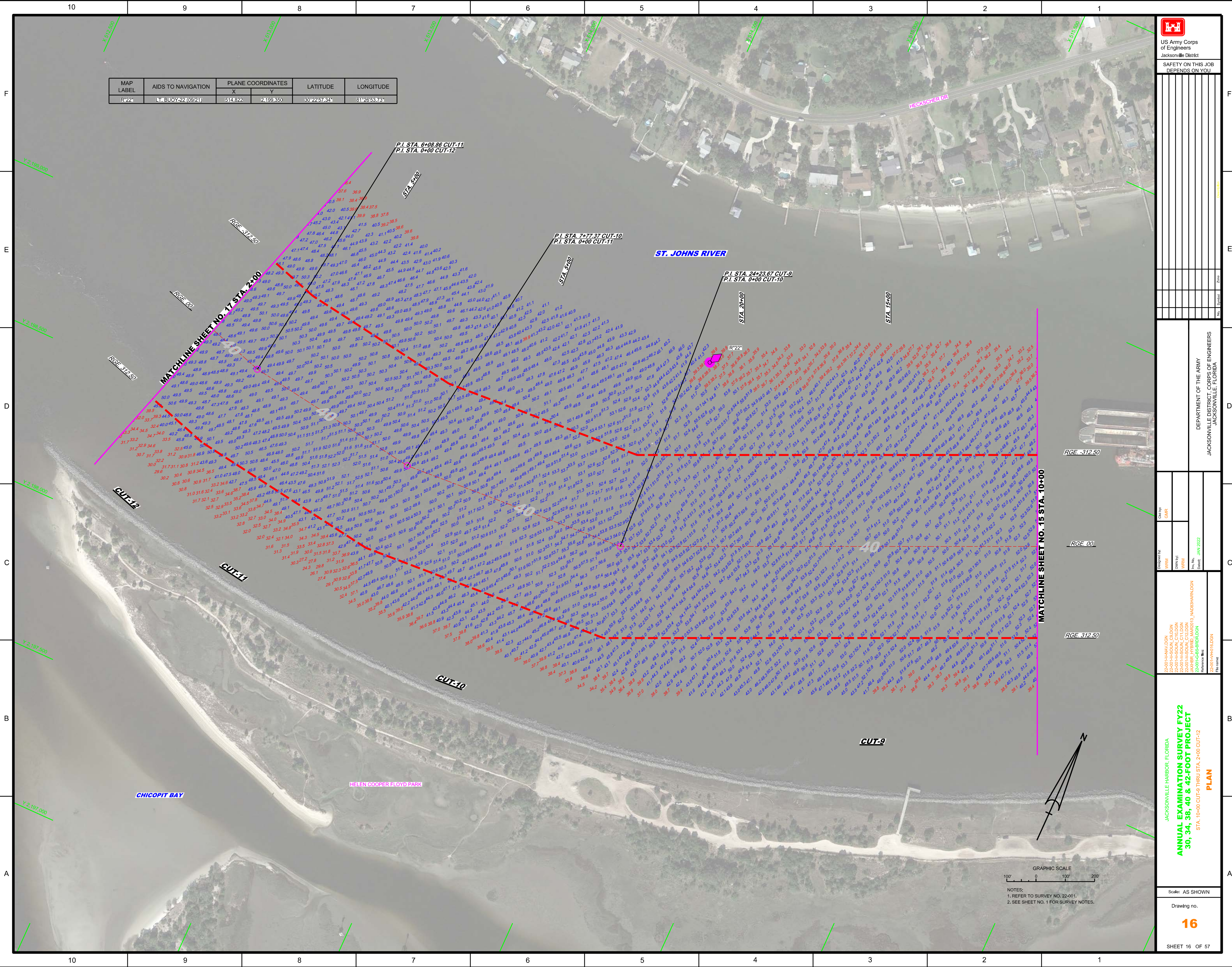
NOTES:
1. REFER TO SURVEY NO. 22-001.
2. SEE SHEET NO. 1 FOR SURVEY NOTES.

MAP LABEL	AIDS TO NAVIGATION	PLANE COORDINATES		LATITUDE	LONGITUDE
		X	Y		
R22	LT. BUOY 22 (09/21)	514,822	2,199,850	30°22'57.84"	81°28'53.73"

US Army Corps of Engineers
Jacksonville District
SAFETY ON THIS JOB
DEPENDS ON YOU

DEPARTMENT OF THE ARMY
JACKSONVILLE DISTRICT, CORPS OF ENGINEERS
JACKSONVILLE, FLORIDA

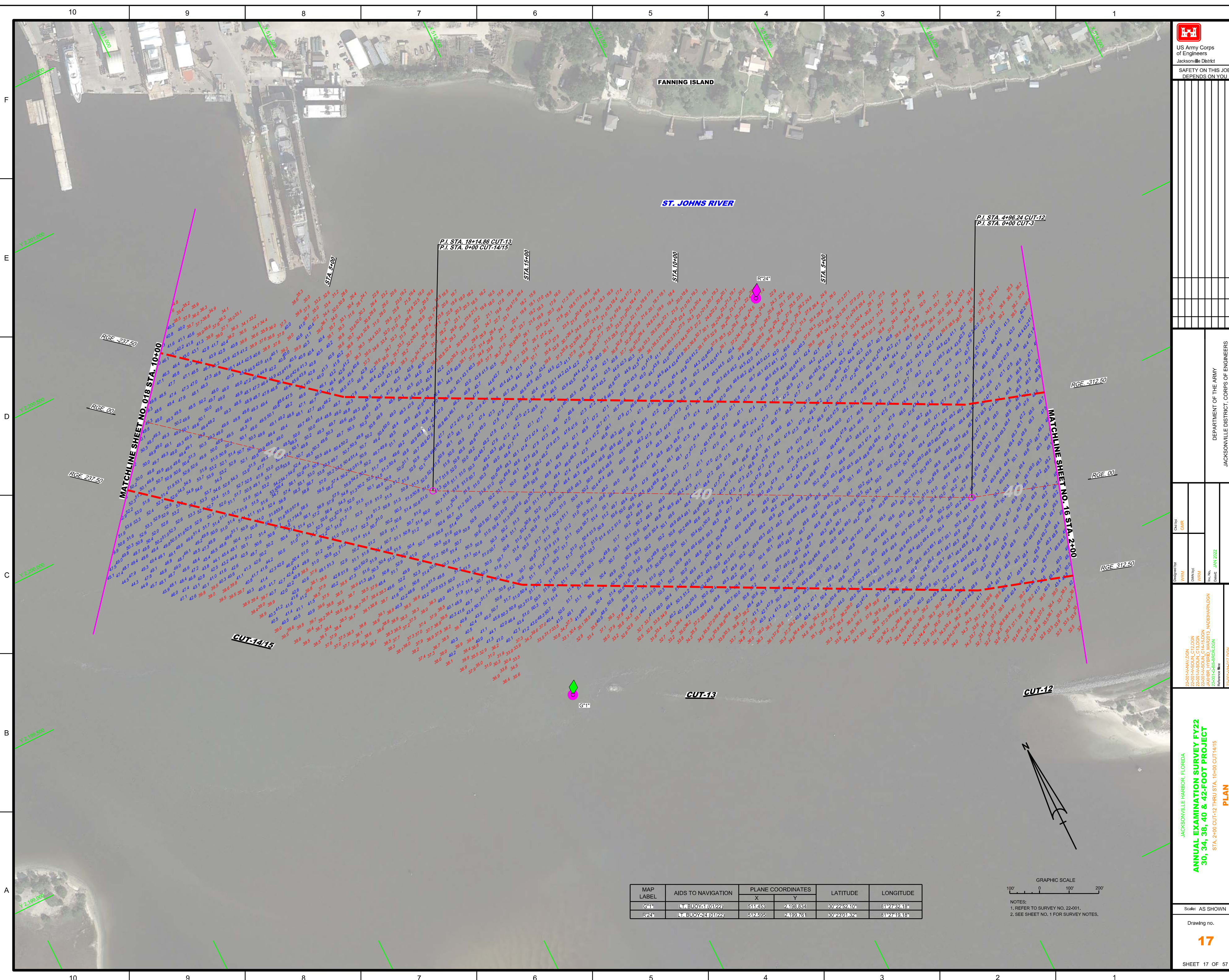
Checked By: GHR
Designed By: WRM, DWH, WRM, WRM
Date: JAN 2022



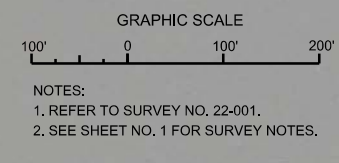
ANNUAL EXAMINATION SURVEY FY22
30, 34, 38, 40 & 42-FOOT PROJECT
STA. 10+00 CUT-9 THRU STA. 2+00 CUT-12
PLAN

Scale: AS SHOWN
Drawing No. 16
SHEET 16 OF 57

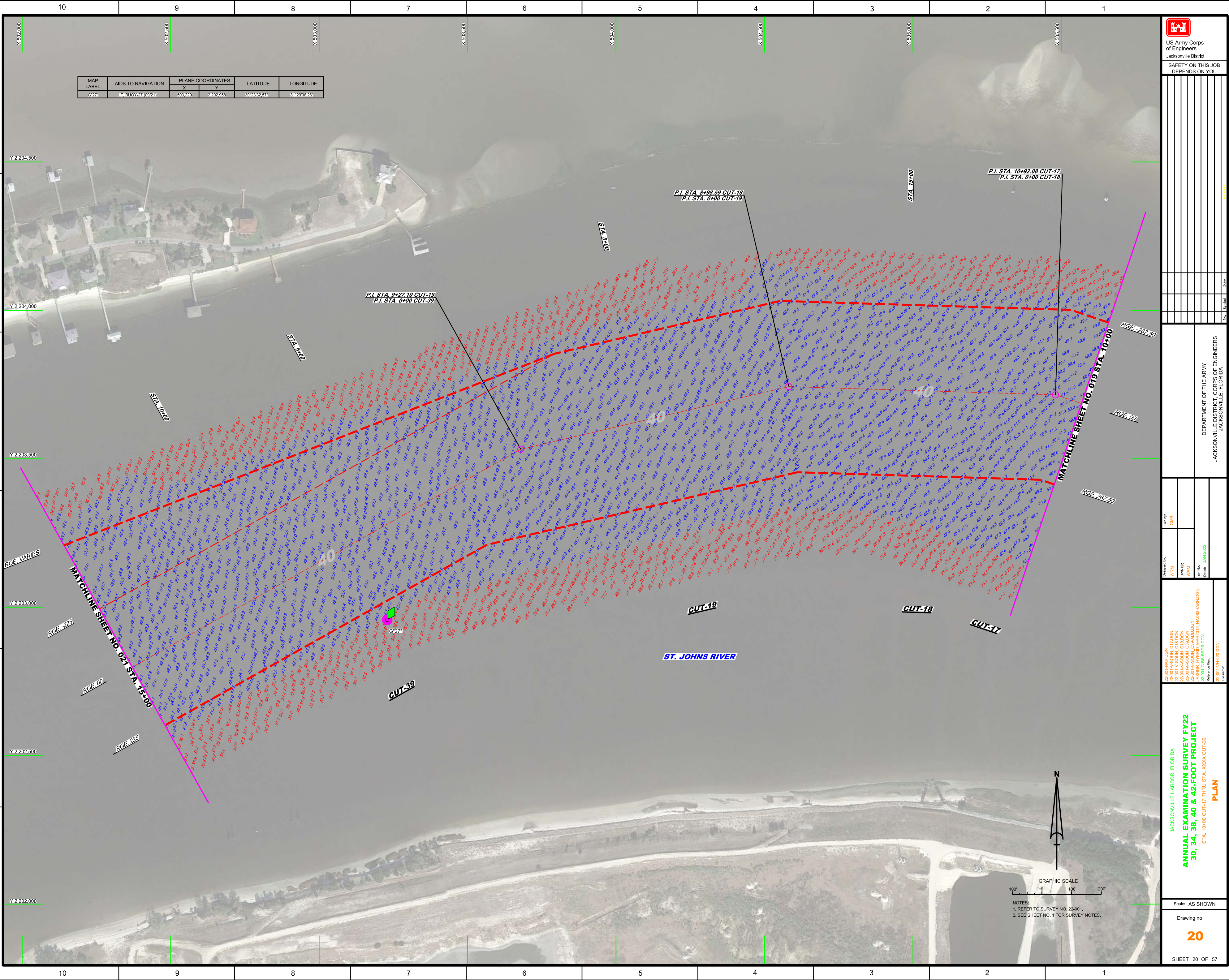
GRAPHIC SCALE
0 100 200
NOTES:
1. REFER TO SURVEY NO. 22-001.
2. SEE SHEET NO. 1 FOR SURVEY NOTES.



MAP LABEL	AIDS TO NAVIGATION	PLANE COORDINATES		LATITUDE	LONGITUDE
		X	Y		
G14	LT BUOY 1 (01/22)	511,453	2,198,834	30°22'52.10"	81°27'32.18"
R24	LT BUOY 24 (01/22)	512,595	2,199,761	30°23'03.24"	81°27'19.18"



MAP LABEL	AIDS TO NAVIGATION	PLANE COORDINATES		LATITUDE	LONGITUDE
		X	Y		
G27#	LT BUOY 27 (0921)	503,225	2,202,553	30°29'52.7"	81°29'06.26"



DEPARTMENT OF THE ARMY
JACKSONVILLE DISTRICT, CORPS OF ENGINEERS
JACKSONVILLE, FLORIDA

Checked By: GHR
Designed By: WRM
Drawn By: WRM
Reviewed By: WRM
Date: JAN 2022

22-001-AN-VJ-DGN
22-001-AS-SOIL-CUT-DGN
22-001-AS-SOIL-C18-DGN
22-001-AS-SOIL-C38-DGN
22-001-AS-SOIL-C40-DGN
22-001-AS-SOIL-C42-DGN
22-001-AS-SOIL-CUT-17-DGN
22-001-AS-SOIL-CUT-18-DGN
22-001-AS-SOIL-CUT-19-DGN
22-001-AS-SOIL-CUT-39-DGN
22-001-AS-SOIL-CUT-DGN

JACKSONVILLE HARBOR, FLORIDA
ANNUAL EXAMINATION SURVEY FY22
30, 34, 38, 40 & 42-FOOT PROJECT
STA. 10+00 CUT-17 THRU STA. XXXX CUT-39
PLAN

Scale: AS SHOWN
Drawing no.
20
SHEET 20 OF 57

GRAPHIC SCALE
100' 0 100' 200'

NOTES:
1. REFER TO SURVEY NO. 22-001.
2. SEE SHEET NO. 1 FOR SURVEY NOTES.